

WALLS & SURFACES

HANDMADE 3D WALL TILES |



Our GFRCCast Concrete, proudly made in India, is a high-performance marvel with the lowest carbon footprint. It boasts a lifespan of over 5 decades, offering remarkable durability and minimal maintenance. Crafted by local artisans using locally sourced materials, it's a testament to our commitment to both the environment and community.

“With every creation, we enhance value, both environmentally and socially.”

Material: HP-GFRC, High performance Glass fibre reinforced concrete, we harness the essence of nature to create our concrete marvels. Utilizing High- Performance Glass Fiber Reinforced Concrete (HP-GFRC), we blend glass fibers, cement, pigments, quartz aggregates, and specialized admixtures. Our streamlined process ensures a consistent mix every time, although the natural variation in color and surface texture is a testament to our material's authenticity. Remarkably, our material eliminates the need for metal reinforcement, thanks to the unparalleled tensile strength of glass fibers. This innovation not only ensures longevity but also allows us to craft exceptionally thin yet robust products, rivaling the strength of metal-reinforced concrete. Embracing nature's elements, we redefine concrete, creating products that are both resilient and eco-conscious.

Material Specifications (HP-GFRC):

Water absorption	% kg/m ³	2-3%
Weight	kg/sq.ft kg/m ³	2000
Weight 20mm slab	N/mm ² or MPa	3.8
Density (Regular concrete)	N/mm ²	1900-2100
Compressive strength	MPa	23-28
Flexural strength	%	33.8
Modulus of elasticity	W/m°C	6170
Shrinkage		<0.2
Thermal insulation		0.12-0.15

Manufacturing Process

Our manufacturing process follows a well structured & quality controlled process. Hence we make sure that our outcome is error-free, every single time.



TYPICAL FORMULATION OF HP-GFRC (Per 100kg)

Cement	M43-53	50 50	kg
Fine aggrigates	Silica sand	3-5	kg
Polymers		0.5 3-	%
Plasticisers		4 14-	%
Fibre glass	AR Chhoped	15	%
Water	Regular/ Warm	0.3-5	kg
Pigments	Inorganic oxide		%

Advantages of cast concrete

- It is highly efficient in reproduction, saving massive costs and time.
- It can be casted in futuristic parametric designs or in highly detailed traditional architecture.
- It is environment friendly upto certain extent.





Custom Color & Textures

We use the best quality of pigments imported from Germany. We have standard colour options, mostly blended from red, yellow and black. We also offer custom colour options as per requirement.



Colors & textures of encoar studio:

We take immense pride in our products, which boast premium craftsmanship and lifetime durability. This commitment is anchored in our use of top-tier inorganic oxide pigments, precisely chosen for their exceptional qualities. They're water-resistant and resistant to lime and alkalis. Most impressively, they stand up to the harshest weather conditions and sunlight, ensuring our products maintain their elegance and coloration for a lifetime.

Regular colors (Available colors in stock):

 W00 Simply White	 GX00 Cement Grey (Lighter cement look)	 Custom color (On request)
---	--	---

Premium colors (On request only & are subject to availability):

 GX05 Cement Grey (Regular cement look)	 PE1B Earth white (Off-white)	 Y10 Light Yellow	 R015 Feather pink	 GR30 Green
 GX30 Dark Grey (Darker cement look)	 PE2B Simply peach (Beige)	 Y30 Yellow	 R10 Light Red	 GR1B Sea green (Natural & earthy)
 GX50 Charcoal Black (Black & Waxed)	 OR1B Orange		 R30 Red	 T1B Teracotta (Reddish tint)
				 T30 Teracotta (Brownish tint)

Standard texture:

 Hand polished (Subtle & smooth finish)

Premium textures (On request only):

 Polished concrete (Waxed finish)	 Air-entrained	 Pumice finish (Raw porous look)
---	---	--

Sizes mentioned are for reference only & may vary slightly on actual production, request you to please confirm sizes before placing order. The images and information contained here is intended only for design professionals & direct clients, specifying all products & projects done. Please do not copy or disclose to others without consent.



Walls & Surfaces

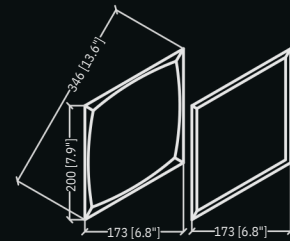
Handmade 3D wall tiles & panels We offer cement based handmade 3D Wall tiles, Flat and Twisted panels. These tiles are highly customisable on no extra costs. We also make 3d Wall tiles with integrated led light modules & Wall panels with integrated optical fibre lighting and Lumstone Slabs (which is integrated customisable acrylic based light panels).



STINGRAY (3D & FLAT)

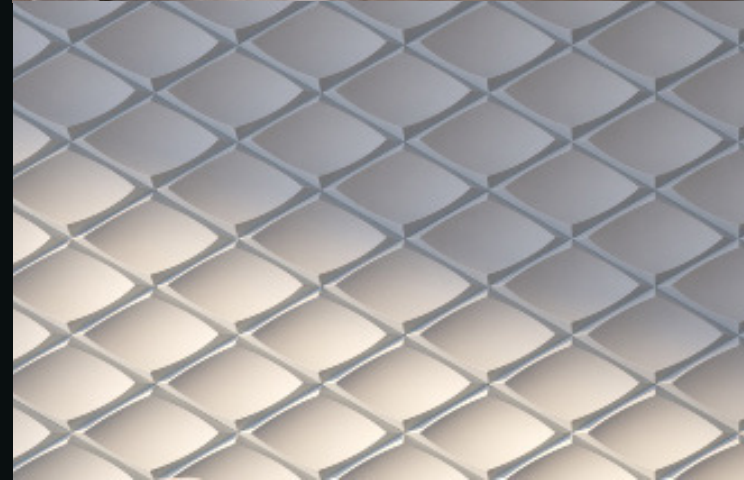
Size (LxBxH): 346.4x200x23mm
Area (per tile): 0.37 sq.ft.
Product code: ARTL-L21
Colors: White, Off-white & Light-grey





STINGRAY (3D & FLAT)

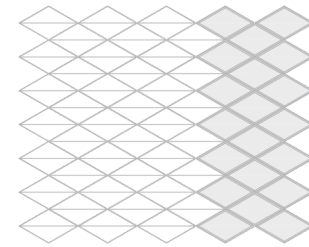
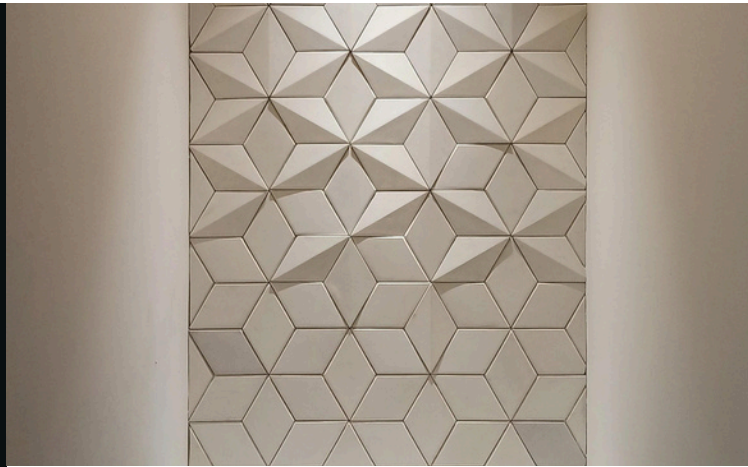
Size (LxBxH): 346.4x200x23mm
Area (per tile): 0.37 sq.ft.
Product code: ARTL-L21
Colors: White, Off-white & Light-grey



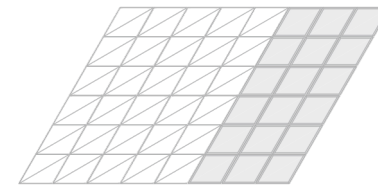


LOBSTER-S MINUS (3D & FLAT)

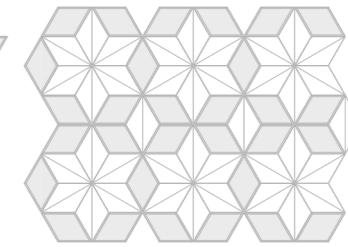
Size (LxBxH): 346.4x200x23mm
 Area (per tile): 0.37 sq. ft.
 Product code: ARTL-L41
 Colors: White, Off-white & Light-grey



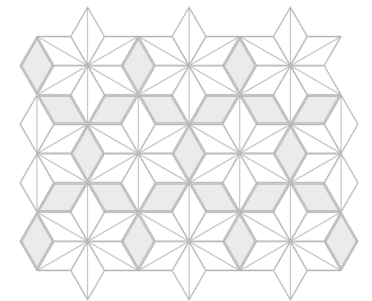
Tiling options 01



Tiling options 02



Tiling options 03



Tiling options 04



LOBSTER-S HEXA (3D & FLAT)

Size (LxBxH): 346.4x200x23mm
Area (per tile): 0.37 sq. ft.
Product code: ARTL-L31
Colors: White, Off-white & Light-grey



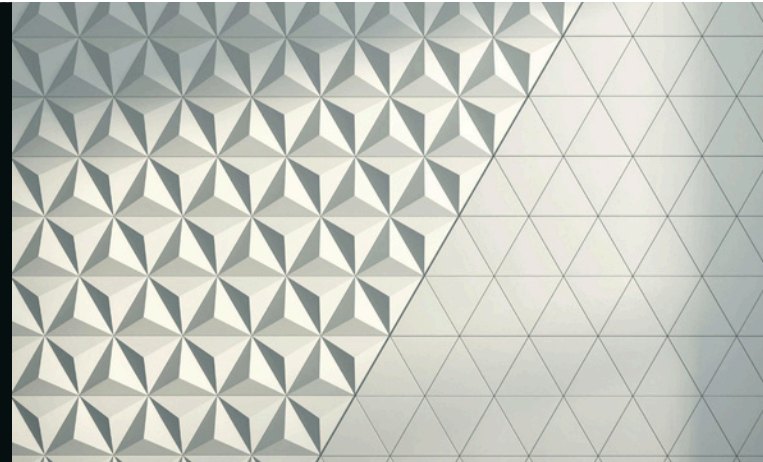


Technical drawing showing the dimensions of the SKATE tile. The drawing includes two views: a 3D perspective view and a 2D top-down view. The dimensions are as follows:

- 3D view: Height is 25mm (0.98"), base width is 200mm (7.87"), and the slanted side length is 173mm (6.81").
- 2D view: Height is 12mm (0.47"), base width is 200mm (7.87"), and the slanted side length is 173mm (6.81").

SKATE (3D & FLAT)

Size (LxBxH): 200x173x25mm
Area (per tile): 0.19 sq.ft.
Product code: ARTL-T21
Colors: White, Off-white & Light-grey





CLAM (3D & FLAT)

Size (LxBxH): 200x173x25mm
 Area (per tile): 0.19 sq. ft.
 Product code: ARTL-T11
 Colors: White, Off-white & Light-grey





Rectangles
Size (LxBxH): 300x100x24mm
Area (per tile): 0.33 sq.ft.
Product code: ARTL-R11
Colors: White, Off-white & Light-grey

Technical drawing showing the dimensions of the tile: 300 [11.8"] height and 100 [3.9"] width.





Shark tile
 Size (LxBxH): 500x300x32mm
 Area (per tile): 1.1 sq.ft.
 Product code: ARTL-N11
 Colors: White, Off-white & Light-grey



SHARK LARGE

SHARK SMALL

Actual product images.



Jelly (3D & Flat)
 Size (LxBxH): 204x177x25mm
 Area (per tile): 0.29 sq.ft.
 Product code: ARTL-H11
 Colors: White, Off-white & Light-grey





Square Clam
Size (LxBxH): 300x150x15mm
Area (per tile): 0.50 sq. ft.
Product code: ARTL-S21
Colors: White, Off-white & Light-grey






Fluted Tiles (12")
 Size (LxBxH): 300x150x15mm
 Area (per tile): 0.50 sq.ft.
 Product code: ARTL-FL 11

Fluted Tiles (36")
 Size (LxBxH): 900x300x20mm
 Area (per tile): 3 sq.ft.
 Product code: ARTL-FL 12
 Colors: White, Off-white & Light-grey




Actual product images.



Square Clam
Size (LxBxH): 300x150x15mm
Area (per tile): 0.50 sq. ft.
Product code: ARTL-S21
Colors: White, Off-white & Light-grey

229 [9.0"]
15
229 [9.0"]

